



Teddi, BuildTeddi & TEDDINET - What does success look like ?

Judith Ward
15 June 2018

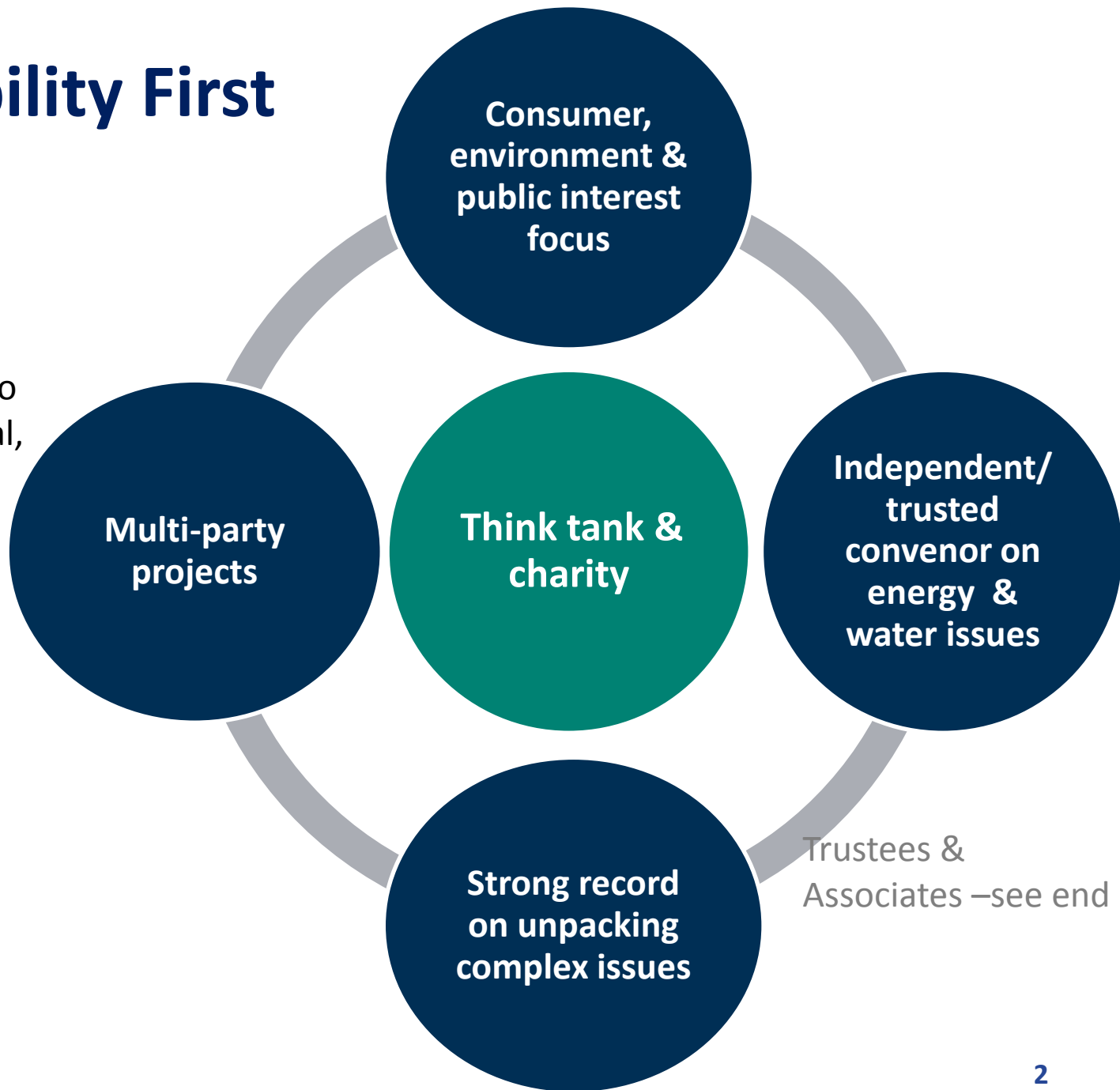
www.sustainabilityfirst.org.uk

 @SustainFirst

Sustainability
first

Sustainability First

Promoting practical, sustainable solutions to improve environmental, economic and social wellbeing since 2000



Today

1. 5-years : a long-time in today's demand-side world
2. My 'success criteria' - & TEDDI impact
3. Other TEDDI successes
4. What more might TEDDI deliver ?
5. Demand-side university research : future impact

My 'success criteria'* – & TEDDI programme impact

- 1. Demand-side innovation funding pots, funders & researchers - better coordination & communication**
- 2. Project data-sets with public / customer-funding - to be leveraged**
- 3. Lessons & insights from trials – promote beyond university community**
- 4. Commercial deployment in the market. Digital energy efficiency as 'business-as-usual'**
- 5. Smart meter energy data – a potential 'public good'**

* I sat on two EPSRC funding panels for BuildTEDDI. And, from 2013-18 was a member of TEDDINET's Advisory Panel

And other successes – Teddi, BuildTeddi & TEDDINET

University success

- Outputs – worthwhile projects, papers, insights
- A new & informed research cohort
- Projects that involve university buildings

And how does TEDDI success inform a wider world ?

- Digital energy efficiency & flexibility in buildings – some insight. Technical; organisational; behavioural.
- Data handling, modelling, prediction ; deployment of sensors & controls. New insights ?

What more might TEDDI deliver ?

Keep feeding-in

- **Project findings & case-studies.** ‘head-line’ what worked & not - consultation submissions, funding ‘calls’, catapults etc.
- **Data-sets** – more analysis ; share.
- **Demand-side models** – feed TEDDI results into demand-side models & impact assessments. Close-working with government, regulator (Ofgem research hub), UKERC, big universities.

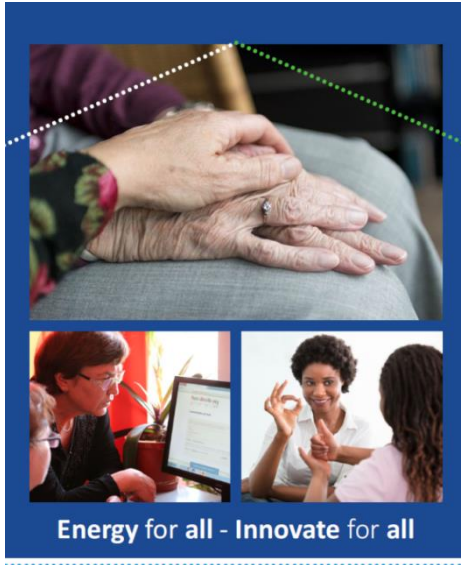
Insights for future impact

- **How to ‘sync’ research outputs / time-lines - w ‘real-life’ commercial, policy & regulatory ‘horizons’** – e.g EV & battery deployment ; time-frames for RII03, Settlement Reform, Carbon Budgets etc
- **Build strong partnerships for BAU deployment** : external partners – energy networks, retail, innovators ; regional / local ; government & regulators ; yr Business Schools & Economics colleagues

Demand-side university research : future impact ?

- **Energy efficiency deployment = Cinderella.** Commercial, institutional, economic, materials, supply-chain, people 'pull'.
- **Heat decarbonisation** - ditto but in reverse order !
(also decarb of shipping, agriculture)
- **Whole system /cross vector** – end-user & customer perspectives on demand-side ; end-customer economics; regional / cross-utility models.
- **Distributional & social justice questions** - to unblock customer pathways for a decarbonised future : 'real-world' fiscal answers needed on who pays for what, when & how.

Sustainability First



Project Inspire - Full Report
Innovation and consumer vulnerability: improving service and quality of life for energy customers in vulnerable situations

Sustainability
first

Project Inspire - Innovation for vulnerable energy customers

Smart Meter Energy Data & the Public Interest 'Benefit'

Our projects in 2018

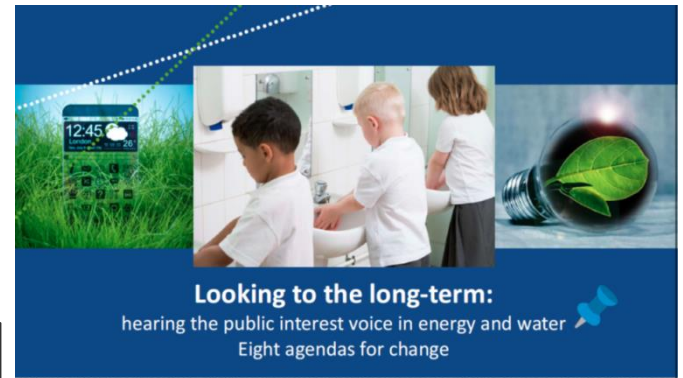
www.sustainabilityfirst.org.uk

Sustainability
first



Smart Meter Energy Data: Public Interest Advisory Group (PIAG)

2



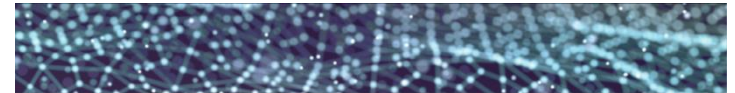
Looking to the long-term:

hearing the public interest voice in energy and water
Eight agendas for change

New Energy and Water Public Interest Network
'New-Pin'

Sustainability
first

New Pin - New Energy & Water Public Interest Network



Fair Futures Project: Summary

Developing sustainable 'licences to operate' for energy
and water companies

www.sustainabilityfirst.org.uk
@SustainFirst

Sustainability
first



Fair Futures – Sustainable Licences to Operate in Energy & Water

Sustainability First - Trustees and Associates

Trustees

Ted Cante (Chair) CBE, DL
Richard Adams, OBE
Phil Barton (Vice Chair)
Sarah Deasley
Don Leiper
Derek Lickorish, MBE
Prof Gordon Mackerron
Derek Osborn, CB
Trevor Pugh
David Sigsworth, OBE, FRSE

Associates

Sharon Darcy (Director)
Judith Ward
Zoe Mcleod
Maxine Frerk
Clare Dudeney
Jon Bird
Dr Martin Hurst
Peter Atherton
Robert Hammond

Sustainability *first*

Judith Ward

Associate

Sustainability First

judith.ward@sustainabilityfirst.org.uk

See our Smart Demand, New-Pin & Inspire publications

www.sustainabilityfirst.org.uk

Follow us on Twitter - @SustainFirst

Registered Charity Number: 3987720

www.sustainabilityfirst.org.uk